



The **AMERICAN SOCIETY**
of **FARM MANAGERS**
and **RURAL APPRAISERS**

*Leading
Agribusiness*





he **AMERICAN SOCIETY of FARM MANAGERS & RURAL APPRAISERS (ASFMRA)...**

...provides members with the resources, information, and leadership that enable them to provide valuable services to the agricultural community. The focus of the ASFMRA is recruiting and maintaining a professional group of accredited members providing farm and ranch management, rural and real property appraising, and agricultural consulting services.



ASFMRA PROFESSIONAL ACCREDITATION PROGRAM

**AFM (ACCREDITED FARM MANAGER)
ARA (ACCREDITED RURAL APPRAISER)
RPRA (REAL PROPERTY REVIEW APPRAISER)
AAC (ACCREDITED AGRICULTURAL CONSULTANT)**

ASFMRA accredited members lead today's agribusiness by meeting the complex needs of agriculture's changing environment. ASFMRA professionals offer expertise in biotechnology, environmental issues, changing technology, land, property, and business valuation, market trends, and governmental involvement and regulations. Understanding and treating the land with respect is more than their job, it is their passion.

To earn accreditation, rigorous education and continuing education requirements must be met, and extensive practical experience in the profession must be demonstrated. More than thirty-five percent of ASFMRA members are accredited.





WE STRIVE TO:

- Provide members with opportunities for professional development and interaction with peers through meetings, publications and educational offerings,
- Maintain the highest level of ethics, standards and quality of service offered by members,
- Promote awareness and confidence in the integrity, objectivity, competence, and professionalism of the ASFMRA's Accreditation Program and members,
- Protect and promote the interests of members and member clients before government, regulatory bodies and other organizations.



MEMBERS BENEFIT FROM SUPERIOR:

- Education and Continuing Education – *farm management, rural appraisal, real property review appraisal, consulting, and on-line education*
- Accreditation programs
- Extensive network of agribusiness leaders
- Standards and ethics
- Publications – *Newsletters, Journal, Membership Directory, Education Catalog, press releases, and collateral materials*
- Government representation and issues information
- State, regional, and national meetings and conferences
- Recognition and awards programs
- Career opportunities

**FOR MORE INFORMATION ON THE ASFMRA, ITS MEMBERS,
AND ITS PROGRAMS, CONTACT THE NATIONAL OFFICE AT:**

950 South Cherry Street, Suite 508

Denver, CO 80246-2664

Ph.: (303) 758-3513 • Fax: (303) 758-0190

E-mail: asfmra@agri-associations.org

www.asfmra.org



***The* AMERICAN SOCIETY of
FARM MANAGERS & RURAL APPRAISERS...**

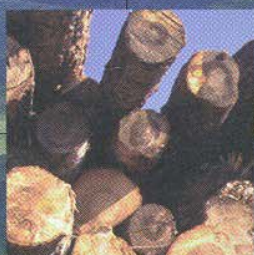
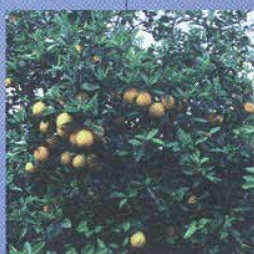
...is the premier organization for professionals who provide management, consultation, and valuation services on rural and agricultural assets. The ASFMRA, founded in 1929, has grown to include nearly 3,000 members, with membership and chapters throughout the U.S., México, and Canada.

The common thread that unites the membership is the respect of, and service to, agriculture and rural North America.

COLLECTIVELY, ASFMRA MEMBERS...

- Manage more than 25 million acres of farm and ranch land for absentee owners, banks, and trusts.
- Complete more than 175,000 appraisals a year on more than 30 million acres of land.





Leading Agribusiness

The **American Society
of Farm Managers
and Rural Appraisers**



950 South Cherry Street, Suite 508
Denver, CO 80246-2664

Ph.: (303) 758-3513

Fax: (303) 758-0190

E-mail: asfmra@agri-associations.org

www.asfmra.org